

Laundry Care



Laundry Care





Contents

Introduction

Uncompromising Miele quality 4-5
The range 6-7
Controls 8-9
Laundry care 10-11
Textile-specific special programmes 12-13

Product advantages

Convenience 14-15
Highlights 16-17
Safety 18-19
Quality 20-21
Sustainability 22

Products

The symbols at a glance 23
W 1000 washing machine range 24-25
W 5000 washing machine range 26-27
WT 2780 WPM washer-dryer 28-31
CareCollection 32-33
Tumble dryers 34-53
Accessories 54-55
Product information 56-58

Uncompromising Miele quality



German engineered and tested to the equivalent of 20 years usage.

Miele Quality – forever better

To ensure that Miele machines will stand the test of time and provide unbeatable performance continually, we really put them through their paces in our test laboratories, before full production commences.

No other brand can claim such a strong commitment to quality, reliability and durability.

The perfect laundry care system for your favourite garments

For over hundred years Miele has led the way in laundry technology. Important milestones have included the world's first washing machine with micro-processor sensors and the revolutionary Miele honeycomb drum.

With this current range of washing machines and tumble dryers, Miele is again setting new standards by combining legendary, tried and tested Miele quality with an elegant design to achieve an exceptional laundry care system for the next generation.

Miele. Forever better



Sustainable innovations

www.mielesustainableinnovations.com.au

Company philosophy

Our aim is to produce and market durable products of the highest quality using procedures that are both economically and ecologically sound. The products should not only offer a high level of performance, efficiency and safety, but they should also have as little impact on the environment as possible, throughout their whole lifespan.



Washing machines - Tumble dryers

The range



The different Miele ranges

Modern or classic:
always perfect in function



Miele W 1000 / T 7000 range:

modern look, perfected technology.

Innovative design and simplicity of operation are the distinguishing features of this range. The distinctive front panel design follows the flow of the convex front panel.

The controls are clearly structured and visible.

The models in this range are push-in and are ideally suited for side-by-side installation as well as for stacking towers.



The W 5000 / T 8000 range:

classic convenience.

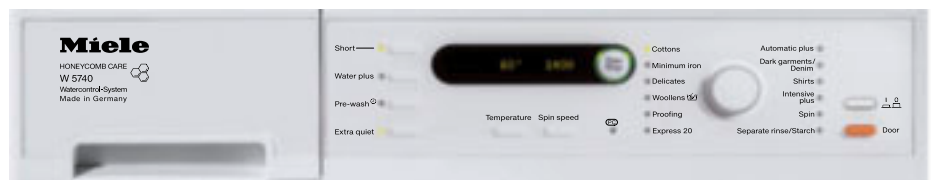
Do you prefer the classic Miele design? Or do you already own a tumble dryer from this range and wish to complement it with another appliance? Then this range is perfect for you! They are suitable for stacking, side-by-side and, for models with straight control panels, also for building under a worktop.

Washing machines - Tumble dryers

Controls

The best Miele for you

Miele washing machines are intuitive and convenient to operate. To accommodate your individual preferences and requirements, Miele offers five control concepts, each of which has a variety of helpful functions. Your new Miele - created just for you!



Single line LCD display, programme selection by rotary control dial and buttons
Clever: the most important programmes and functions - all at a glance.



Two line LCD display with large lettering, large text on the control panel, programme selection by rotary control dial, back-lit programme options
Compact: all programmes are selectable with a turn of the control.



Three line LCD display, programme selection by rotary control dial and buttons
 Versatile: with a variety of practical special programmes and useful functions.



Large touch-screen display, touch-screen programme selection
 Intelligent: clever touch-screen display with a large variety of special programmes and functions.



Washing machines

Laundry care

Your clothes: cherished pieces for looking good and feeling great.
And not only valuable for that ...



Do you love fashionable and individual clothes? Then the value of a washload could be worth more than the cost of the machine.

It pays then, to give your clothing the best possible care to help maintain the value of your textiles for as long as possible: with Miele washing machines.

The patented¹⁾ Miele honeycomb drum



**Only from
MIELE** **Laundry care with the
unique honeycomb
structure**

With the unique concave honeycomb surface structure, the Miele honeycomb drum forms a fine film of water between the textiles and the drum wall which gently cushions and protects your laundry.

Unique drum perforations

The perforations in the Miele honeycomb drum are noticeably smaller than in standard drums; the rim of each individual hole is polished smooth, meaning far less mechanical stress for your textiles and no burling, even on the highest spin speeds.



1 - 8 kg capacity

Miele washing machines offer up to 8 kg capacity, allowing you to wash even your largest items, e.g. pillows and duvets easily.



Honeycomb drum



Standard drum



The result

The "WFK Research Institute for Cleaning Technology", Krefeld verifies the optimum laundry care with the Miele honeycomb drum.

Optimum care

Thread pulls and burling are clear signs of textile wear. The Miele honeycomb drum demonstrably inhibits such effects.

Front-loading washing machines

Textile-specific special programmes

Different textiles - different requirements. The Miele special programmes are a perfect match.



Automatic Plus

For a combined wash load of cottons and minimum iron items.



Delicates

For the gentle care of synthetic or delicate fabrics.



Denim

Protects your favourite jeans from fading and creasing.



Woollens

Gentle care for woollen and wool-blend garments - even if the care label says hand wash only.



Silks

Cleans and cares for delicate silks and any handwash textiles which do not contain wool.



Curtains

Dust particles are gently removed, then the sensitive drum rhythm reduces creasing.



Shirts

Prevents creasing of shirts and blouses and reduces ironing time.



Sportswear

Quick and gentle cleaning of synthetic sports and fitness wear.



Outerwear

Maintains the technical properties (e.g. breathability) and softness of outdoor clothing such as Gore-Tex, Sympatex, Windstopper jackets and trousers etc.

Individual care for your laundry to keep it beautiful for years to come.



Proofing

For the re-treatment of technical fabrics, microfibre or ski clothing with a proprietary proofing agent.



Cottons Eco plus

Uses up to 30% less energy in comparison with the cottons programme, thanks to a lower wash temperature. The longer run time delivers top washing performance.



Pillows

For gentle cleaning of synthetic filled pillows. Excellent rinse results, even for very thick pillows.



Down

Especially for down garments such as jackets, sleeping bags, cushions, etc. With a sensitive drum rhythm and gentle high-speed spin.



Duvets

Smooth and gentle with a sensitive drum rhythm, a special spin profile and optimum spin results.



Express 20

For rapid cleaning or freshening-up of lightly soiled textiles. Quick and effective due to the special "rinse wash".



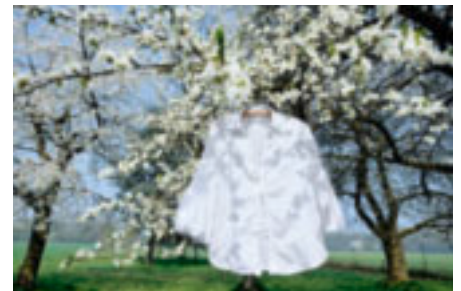
Hygiene

Bacteria and dust mites are killed off by the high water levels and extended temperature holding times. So allergy sufferers can breathe easily.



Steam care

Damp, freshly washed textiles are effectively smoothed with steam. Reduces ironing by up to 50%.



Freshen up

Gentle, constant moistening smooths dry textiles and freshens them up. Ideal for ironing preparation.

Washing machines

Product advantages: convenience



Only from
MIELE

AutoClean



This patented¹⁾ Miele detergent drawer is automatically rinsed out during every programme with a number of powerful bursts of water, keeping the detergent compartments spotlessly clean.



EcoFeedback

The Miele W 5873 WPS washing machine with the EcoFeedback function gives you an exact reading of current electricity and water consumption, so you are always in complete control. You can call up the prognosis for the consumption prior to the start of the selected programme. At the end of the programme the exact consumption data is displayed, which can vary according to the load.



Extra quiet function

Using a special drum rhythm and automatic "rinse hold", the Miele washing machine is even quieter on selected programmes - which you will appreciate if the washing machine is located in the living area.



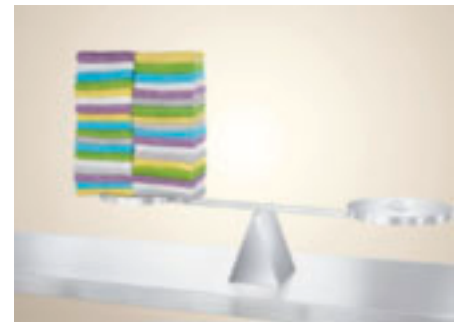
Convenient loading angle

The doors of Miele laundry appliances open especially wide. The wide opening and the ergonomic loading angle make loading and unloading more comfortable, giving you a better view into the drum and saving your back.



Drum lightning

Many Miele washing machines are fitted with maintenance-free power LEDs, which perfectly illuminate the Miele honeycomb drum, so that no item is overlooked when unloading.



Load display and dispensing recommendation

All top Miele models are equipped with this intelligent function. It helps to avoid over- or underloading the drum. In addition it offers a recommendation for optimum detergent dispensing, helping you to achieve an environmentally friendly wash with optimum results.



Professional Balance System

All Miele washing machines are able to recognise washload distribution imbalance in the drum when spinning. The textiles, even larger items are optimally redistributed by clever drum movements for best spin results.



Hygiene reminder

Washing at lower temperatures saves energy. This function reminds you after 20 low temperature wash cycles to run a wash programme of more than 60°C, to prevent the growth of bacteria and unpleasant odours in the machine.



Automatic load recognition

All Miele washing machines have the intelligent automatic load recognition function. It matches the required water volume exactly to the load size, using only as much water and energy as required for optimum washing and rinsing results.

Washing machines

Product advantages: highlights



Only from
MIELE

AutoDos - Automatic detergent dispensing



Load the laundry, start the programme, that's it. The AutoDos dispensing unit for powder and liquid detergent

takes care of the rest. During the water intake process, the unit automatically dispenses the correct amount of detergent, precisely adapted to the size of the load, the level of soiling and the wash programme selected. It even knows whether to use powder or liquid detergent. Perfect wash results and gentle laundry care. With average use, the containers need only to be refilled twice a year. If you want to use a specialist detergent, you simply add these to the AutoClean detergent drawer. And what's more when compared to manual dispensing, the automatic dispensing unit gives savings of up to 30% - good for both the environment and your wallet.



Miele CareCollection

Miele is the only appliance manufacturer to offer a range of specialist detergents and conditioning products specifically designed for use with its laundry programmes. And when combined with automatic dispensing, designed for use with CareCollection products, Miele can offer you a complete system. Load the laundry, start the programme, that's all you have to do.



SteamCare

SteamCare technology from Miele gently and effectively smooths your textiles.

According to textile type, ironing is either unnecessary or reduced by up to 50%. Another practical point: you can also freshen up textiles which have been worn for a short time with SteamCare, saving many a "small" wash.





Washing Tips

With the Miele Supertronic washing machine, you are guided step by step to a perfect wash result. Simply select the type of fabric and colour of garment, the level of soiling and the spin speed required and the optimum programme will appear in the display. Perfect laundry care has a new benchmark.

Supertronic touch controls

With new touch controls, washing tips and the option of saving up to 10 individual programmes as favourites, laundry care is easier than ever before.

The Supertronic washing machine is operated in a unique and innovative way. Backlit controls are combined with a touch display. All that is needed to select the functions is a light touch. And the flush design of the display complements the clean, modern lines of the appliance.



Only from
MIELE

Stain removal programme option



You can treat 22 different types of stain with Miele, targeting up to 3 simultaneously. Simply add the programme option,

and the controls optimise the wash programme to deal with your laundry and the stains.

Only Miele washing machines have an integrated stain advisor: tips for efficient stain removal are given in the display.

Washing machines

Product advantages: safety and quality



Top level quality assurance

The purpose of the endurance testing laboratory is in the name: Here, washing machines and tumble dryers are put through their paces in a 5000 cycle equating to a product life of 20 years.

Other laboratories, such as the laundry care centre, are no less precise and demanding. Test laundry is loaded into machines by the basket load. And while the machines plod on, their efficiency is being monitored by high tech measuring equipment. These are the extents Miele goes to when proving the efficacy of existing programmes and developing new ones.



Alongside testing finished appliances, Miele also inspects components before, during and after fitting, as well as the packaging which must meet the highest of standards.



German engineered and tested to the equivalent of 20 years usage.





Foam regulation

If too much detergent is dispensed, this results in excessive build-up of foam. Miele washing machines balance this out automatically in the wash, spin and/or rinse phases, guaranteeing optimum wash and rinse results every time.



Optical interface

All Miele washing machines have an integral PC interface. In case of a fault, the Miele service engineer can communicate with your appliance via a laptop and quickly identify the source of the problem. This interface is also used on some models to load additional programme packets.



Emergency door release

In case of a power cut, the door can be released for removal of your washing.



Child safety

The door cannot be opened during a wash. The child safety lock also prevents the alteration or ending of wash programmes.

Washing machines

Product advantages: quality



The classic Miele chrome ring

The sleek and elegant chrome ring harmonises perfectly with the Miele housing design. It is knock-, dent- and scratch proof and looks as good as new even after many years.



Only from
MIELE

The patented¹⁾ Miele 2K door

The W 1000 range is fitted with this innovative door. It is knock and dent proof and can withstand the greatest of stress. It is manufactured in a two-component process which is also used for safety helmets.



Only from
MIELE

Enamelled front

Miele is the only white goods manufacturer to enamel the front of all their washing machines. The superior enamelling is scratch- and corrosion-, acid- and alkaline-resistant, easy to clean and colourfast.



Watercontrol-System (WCS)

With WCS a water level sensor controls the water inflow. If the normal water level is not reached, inflow is stopped. If water should ingress inside the appliance, the inlet valve is closed and the water pumped away into the suds container.



Waterproof-System (WPS)

This sophisticated waterproof system offers an even higher level of protection against water damage. The inlet hose is braided with metal to protect it from external damage.



Waterproof Metal

The Waterproof Metal system incorporates a metal braided hose and float switch to detect leaks, and a time controlled safety check which automatically closes off the water inlet and drains water out of the machine if it does not fill within a specific time-frame.



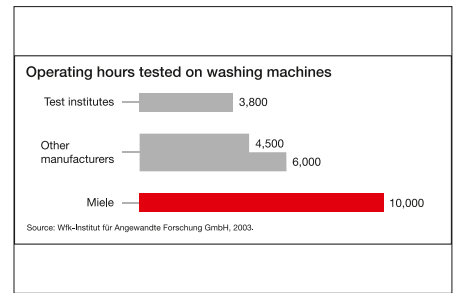
Stainless steel suds container

The suds container is particularly robust and hygienic. It is supported by shock absorbers and four tension springs, and is stabilised by cast-iron counterweights for minimum wear and long life. Miele washing machines are stable and quiet, even at high spin speeds.



Professional drive

This maintenance free high-performance motor is at the heart of some of the top of the range Miele washing machines for a long appliance life. It is even quieter than other Miele motors, especially on higher spin speeds.



Only from MIELE Tested for a 20 year lifespan

The WFK Research Institute for Cleaning Technology e.V. Krefeld tested washing machines from 6 different manufacturers. The result: only the 3 Miele machines passed the test. In order to comply with the highest quality standards, Miele subjects its appliances to stringent and prolonged tests. Test duration for Miele washing machines totals 10,000 operating hours*. This corresponds to a lifespan of 20 years. No other manufacturer tests as strenuously as Miele.

* 10,000 operating hours using a variety of wash programmes with different run times.

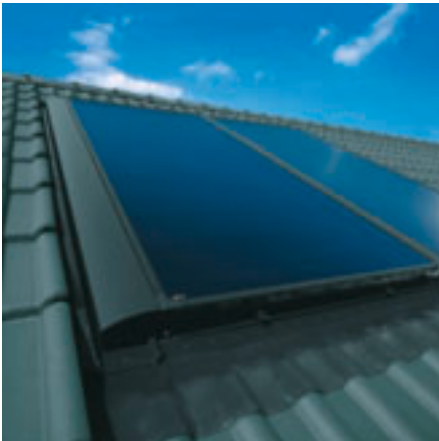
Washing machines

Product advantages: sustainability



Lower consumption

Miele washing machines are extremely efficient in their use of energy, whether washing full or half loads. All Miele washing machines have a 4.5 star energy efficiency rating.



Cold & hot water connection

Certain Miele washing machines models are fitted with a second water connection for hot water. If the household water is warmed by an energy-neutral method, for example by solarthermic panels and gas, this can provide a saving of approx. 47% on energy costs. (Hot water is drawn in for programmes with a selected temperature of 40°C or higher)



Saving energy with lower temperatures

Thanks to Miele's advanced wash technology, the wash temperature can be reduced on most programmes to 20°C or even to "cold", resulting in demonstrable energy savings on lightly soiled washes. Miele's CareCollection range of phosphate free detergents are also optimised to perform at low temperatures thus saving energy without compromising wash results for light soiled laundry.

What do they mean?

The symbols at a glance

Washing machines



Honeycomb drum: a thin film of water between the drum and the laundry ensures gentle laundry care



Stains option: up to 3 stains from a selection of 22 can be treated in one programme



AutoClean: self-cleaning detergent dispensing drawer



Silence: certain parameters are set for even greater reductions in noise level



EcoFeedback: this appliance lets you know exactly how much electricity and water it is using



Watercontrol-System (WCS): controls the water inlet and switches the machine off if there is a problem



Waterproof-System (WPS): like WCS, but with an additional valve and a strengthened water inlet hose



Cold hot water connection: energy savings of up to 47% are possible



Waterproof-Metal (WPM): like WPS but with a metal braided water inlet hose



W 1000 washing machine range

Product overview



Model-/ Name	W 1913
Drum	
Patented honeycomb drum	●
Load in kg	1-7
Intelligent washing	
Option to add additional programmes	-
Low temperature washing ("Cold", "20°C")	●
Optional hot water connection	-
Spin speed	
Min-Max spin in rpm	400-1300
Rinse hold/"Without spin"	●/●
Design	
Control panel	5° incline
Control panel colour	Lotus white
Appliance colour	Lotus white
Programme selection	
Programme selection	Rotary selector
Display	1-line
Programme sequence display	Display
Features	
Delay start up to 24 hours/Time left display/Time of day display	-/●/-
Buzzer/LED-drum lighting	●/-
Choice of operating language	●
AutoClean detergent drawer	●
Load recognition/Dosage recommendation	-/-
Wash programmes	
Automatic Plus	●
Cottons/Minimum iron/Delicates	●/●/●
Shirts/Silks/Woollens	-/-/●
Express 20/Intensive Plus	●/●
Dark garments/Denim	●
Proofing/Outerwear/First wash	-/-/-
Separate rinse/Starch	●/●
Spin	●
Programme options	
Short/Soak	●/-
Pre-wash/Pre-wash with soak function	-/●
Water Plus/Extra rinse	●/-
Extra Quiet/Stains/Steam smoothing	●/-/-
Safety	
Water protection system	WCS
Child safety/PIN code lock	●/●
Quality	
Chrome ring door/2K-door	-/●
Professional motor	-
Suds container	Stainless steel
Enamelled front	●
Installation	
Stackable/Side-by-Side	●/●
Slides under worktop/Built-under	●/-
Dimensions and consumption values (Cottons 40°C programme)	
H x W x D (cm)	85.0 x 59.5 x 65.6
Energy efficiency star rating	4.5
Warm wash energy consumption (kWh/year)	210
Water Efficiency star rating (WELS)	4
Water consumption (l/wash)	69





W 5000 washing machine range

Product overview



Model-/ Name	W 5741	W 5903 WPS	W 5873 WPS
Drum			
Patented honeycomb drum	●	●	●
Load in kg	1-7.5	1-7.5	1-8
Intelligent washing			
Option to add additional programmes	-	-	●
Low temperature washing ("Cold", "20°C")	●	●	●
Optional hot water connection	-	●	●
AutoDos: Automatic dispensing of liquid and powder detergent	-	-	-
SteamCare technology	-	-	-
Spin speed			
Min-Max spin in rpm	400-1400	400-1400	400-1600
Rinse hold/"Without spin"	●/●	●/●	●/●
Design			
Control panel	23° angle	23° angle	23° angle
Control panel colour	Lotus white	Lotus white	Lotus white
Appliance colour	Lotus white	Lotus white	Lotus white
Programme selection			
Selection via	Rotary selector	Rotary selector	Rotary selector
Display	1-line	2-line	1-line
Programme sequence display	In display	In display	In display
Features			
Delay start up to 24 hours/Time left display/Time of day display	-/●/-	●/●/-	●/●/-
Buzzer/LED-drum lighting	●/-	●/-	●/-
Choice of operating language	●	●	●
AutoClean detergent drawer	●	●	●
Load recognition/Dosage recommendation	-/-	-/-	-/-
Wash programmes			
Automatic Plus	●	●	●
Cottons/Minimum iron/Delicates	●/●/●	●/●/●	●/●/●
Shirts/Silks/Woolens	●/-/●	-/-/●	●/-/●
Express 20/Intensive plus	●/●	-/-	●/-
Dark garments/Denim	●/●	●/●	●/●
Down duvets/Pillows/Down filled items	-/-/-	-/-/-	●/-/-
Proofing/Outerwear/First wash	●/-/-	-/-/-	●/●/-
Lingerie/Sportswear/Trainers	-/-/-	-/-/-	-/-/-
Hygiene programmes/Eco programmes/Steam programmes	-/-/-	-/-/-	1/3/-
Separate rinse/Starch/Spin	●/●/●	●/●/●	●/●/●
Programme options			
Pre-wash/Pre-wash with soak function/Soak	-/●/-	●/-/●	●/-/●
Short/Water Plus/Extra rinse	●/●/-	●/●/-	●/●/-
Extra Quiet/Stains/Steam smoothing	●/-/-	-/-/-	●/●/-
Safety			
Water protection system	WCS	WPS	WPS
Child safety/PIN code lock	●/●	●/●	●/●
Quality			
Chrome ring door/2K-door	●/-	●/-	●/-
Professional motor	-	-	●
Suds container	Stainless steel	Stainless steel	Stainless steel
Enamelled front	●	●	●
Installation			
Stackable/Side-by-Side	●/●	●/●	●/●
Slides under worktop/Built-under	●/●	●/●	●/●
Dimensions and consumption values			
H x W x D (cm)	85.0 x 59.5 x 61.5	85.0 x 59.5 x 61.5	85.0 x 59.5 x 61.5
Energy efficiency star rating	4.5	4.5	4.5
Warm wash energy consumption (kWh/year)	208	208	221
Water Efficiency star rating (WELS)	4.5	4.5	4.5
Water consumption (l/wash)	62	62	68





W 5965 WPS	W 5000 WPS Supertronic
●	●
1-8	1-8
●	●
●	●
●	●
-	●
●	●
400-1600	400-1600
●/●	●/●
23° angle	23° angle
Lotus white	Alu/silver
Lotus white	Lotus white
Rotary selector	Touch controls
3 line LCD display	Navigation display
In display	In display
●/●/●	●/●/●
●/●	●/●
●	●
●	●
●/●	●/●
●	●
●/●/●	●/●/●
●/●/●	●/●/●
●/-	●/-
●/●	●/●
●/●/●	●/●/●
●/●/●	●/●/●
-/●/●	-/●/●
1/3/2	1/3/2
●/●/●	●/●/●
●/-/●	●/-/●
●/●/●	●/●/●
●/●/●	●/●/●
WPS	WPS
●/●	●/●
●/-	●/-
●	●
Stainless steel	Stainless steel
●	●
●/●	●/●
●/●	●/●
85.0 x 59.5 x 61.5	85.0 x 59.5 x 61.5
4.5	4.5
221	221
4.5	4.5
68	68



Washer-dryers

Product advantages: the highlights



Only from
MIELE

Freshen up with steam

The freshen up programme smooths and freshens creased, unworn garments by subtly steaming them. In special programmes, e.g. shirts, steam gives a particularly crease-free finish. Ideal also for ironing preparation: dry or newly washed laundry is pre-smoothed for quicker and easier ironing.



Only from
MIELE

Stains option

Your Miele washer-dryer can individually treat up to 22 stain types – up to 3 simultaneously, on most wash programmes.



The integrated stain advisor in the display gives you useful tips and helps you to select the right options. The wash programme is then perfectly matched to your textiles and the type of stain, for thorough cleaning and the best laundry care.



Only from
MIELE

Most economical washer-dryer on the market

Only a Miele washer-dryer delivers the best wash efficiency with lowest water and energy consumption. The Miele washer-dryer achieves an excellent 4 star energy rating for washing and for drying as well as a 4 star WELS water efficiency rating.





Only from
MIELE

The patented¹⁾ Miele honeycomb drum



In the unique Miele honeycomb drum your laundry floats softly on a cushion of water, which forms in the depressions of the sculpted honeycomb structure for the gentlest laundry care.



Only from
MIELE

Rinse out fluff

After the drying cycle this special programme rinses fluff out of the condensate channel and the drum to avoid discolouration from stray fluff fibres.



Thermospin

After the wash cycle the laundry is moved through a warm current of air and is spun in stages. This reduces residual moisture, saving time and energy in drying.



Extra Quiet function

Using a special drum rhythm and automatic "rinse hold", the Miele washer-dryer is even quieter on selected programmes - something you will appreciate if it is located in the kitchen.

¹⁾ European Patent EP 0 935 687 B1

WT 2780 WPM washer dryer

Product overview



Load capacity display and dispensing guide

This intelligent function helps you to avoid under- or overloading and to dispense the correct amount of detergent every time. A considerable contribution to environmentally-friendly laundry care – with optimum results.



Short programme times

All programmes are tailored to suit a variety of textile types and last only as long as is necessary to achieve perfect results. Thermospin reduces programme durations even further. For example, the Express programme takes only 90 minutes from the start to a fully dried garment.



Drum lighting

The maintenance-free power LED illuminates the Miele honeycomb drum so perfectly, that garments cannot be overlooked when unloading.



Model-/ Name	WT 2780 WPM
Drum	
Patented honeycomb drum/microperforated drum	●/-
Load in kg: washing/drying	5.5/2.5
Intelligent washing and drying	
Option to add additional programmes	
Low temperature washing ("Cold", "20°C")	●
Optional hot water connection	-
Spin speed	
Min-Max spin in rpm	400-1600
Rinse hold/"Without spin"	●/●
Design	
Control panel	Straight
Control panel colour	Lotus white
Appliance colour	Lotus white
Programme selection	
Programme selection	Rotary selector
Display	3-line
Programme sequence display	Display
Features	
Delay start up to 24 hours/Time left display/Time of day display	●/●/●
Buzzer/LED-drum lighting	●/●
Choice of operating language	●
Automatic rinse out fluff	●
Load recognition/Dosage recommendation	●/●
Washing and drying programmes	
Automatic Plus	-/●
Cottons/Minimum iron/Delicates	●/●/●
Shirts/Silks/Woollens	●/●/●
Express 20/Intensive Plus/Soft toys	●/-/●
Dark garments/Denim/Hygiene	●/●/●
Proofing/Outerwear/First wash	●/●/●
Lingerie/Sportswear/Trainers	-/●/●
Down items/Pillows/Curtains	-/●/●
Separate rinse/Starch	●/●
Drain/Spin	●
Programme options	
Short	●
Soak/Pre-wash/Water plus	●/●/●
Low temperature	●
Extra Quiet/Stains	●/●
Safety	
Water protection system	WPM
Child safety/PIN code lock	●/●
Quality	
Chrome ring door/2K-door	●/-
Suds container	Stainless steel
Enamelled front	●
Installation	
Stackable/Side-by-Side	-/-
Slides under worktop/Built-under	●/●
Dimensions and consumption values (Cottons 40°C programme)	
H x W x D (cm)	85.0 x 59.5 x 58
Energy efficiency star rating (washing)	4
Warm wash energy consumption (kWh/year)	200
Water Efficiency star rating (WELS)	4
Water consumption (l/wash)	51
Energy efficiency star rating (drying)	4
Energy consumption (kWh/year) (drying)	77



Laundry care

CareCollection



Miele UltraWhite detergent

For the best wash results in Miele washing machines.

- Powerful formula with active oxygen – for a dazzling white wash
- Excellent stain removal even at low temperatures
- Ideal for soaking/pre-treating stubborn stains
- Highly concentrated
- Temperature range: Cold-95°C
- Contents: 2.5 kg
- For 48 wash loads
- Phosphate free



Miele UltraColor liquid detergent

For the best wash results for coloured and dark textiles in Miele washing machines.

- Colour protection formula for brighter colours
- Excellent stain removal even at low temperatures
- Temperature range: Cold-60°C
- Contents: 2 l
- For 33 wash loads
- Phosphate free



Miele WoolCare detergent

For the best wash results for woollens, silks and any delicate fabrics in Miele washing machines.

- Colour protection formula for brighter colours
- Special care complex containing wheat protein
- Fibre protection against felting
- Very concentrated
- Temperature range: Cold-60°C
- Contents: 2 l
- For 50 wash loads
- Phosphate free



Miele Fabric softener

For the best results in Miele washing machines.

- Fresh, natural fragrance
- For softer laundry
- Contents: 2 l
- For 66 wash loads
- Phosphate free



Miele UltraColor detergent

For the best wash results for coloured and dark textiles in Miele washing machines.

- Colour protection formula for brighter colours
- Excellent stain removal even at low temperatures
- Temperature range: Cold-60°C
- Contents: 1.8 kg
- For 48 wash loads
- Phosphate free



Miele Down detergent

For the best wash results in Miele washing machines.

- Ideal for pillows, sleeping bags or expensive down garments
- Retains the elasticity of the feathers
- Retains the breathability of the down fabric
- Down retains its loft and does not become lumpy
- Contents: 250 ml
- For 14 wash loads
- Phosphate free

Miele Sportsweat detergent

For best wash results in Miele washing machines.

- Perfect for breathable sportswear
- Built-in odour absorption neutralises unpleasant odours
- Cleans and cares for colours
- Retains the properties of fleece
- Retains shape stability of textiles
- Contents: 250 ml
- For 14 wash loads
- Phosphate free

Miele Sensitive Skin detergent

For the best wash results in Miele washing machines.

- Milder formula with active oxygen
- Excellent stain removal even at low temperatures
- Very concentrated
- Temperature range: Cold-95°C
- Contents: 1.8 kg
- For 48 wash loads
- Phosphate free



Tumble dryers

Drying systems



The Miele drying systems

Tumble dryers are a convenient way to dry laundry in a short time. The principle is that warm air is passed through the garments to remove residual moisture from the fibres. Miele offer two different types of drying system. The main features of each are briefly explained here.



Condenser tumble dryers

A condenser tumble dryer allows flexibility of positioning, as the only connection required is an electrical socket. Instead of ducting moist air to the outside, condenser dryers cool it in a closed circuit. The moisture condenses and is collected in an integrated container, which must be emptied regularly. Miele condenser dryers also have the option of emptying condensate via an integrated condensate drain hose into a sink or, suitable waste pipe.

Condenser dryers achieve a 2 star energy efficiency rating.

Heat pump tumble dryers

The very economical Miele heat pump dryer offers the same convenience and flexibility as a condenser dryer, but uses up to 50% less energy. This type of drying system is particularly kind to your laundry and uses up to 22% less electricity than the classification required for achieving energy efficiency rating of 6 stars. This exemplary Miele appliance concept was awarded the certificate* for “Best customer benefit” for the best combination of energy consumption, noise level, drying time and condenser dryer efficiency.

*SLG Test and Certification Ltd.

Tumble dryers

Laundry care

Your clothes: cherished pieces to look good and feel great in. And not only valuable for that...



The value of a dryer load, depending on the contents, can amount to more than that of the tumble dryer. A good reason to maintain the value of your laundry for as long as possible. Useful special programmes (see pp.36 - 37) and intelligent functions such as PerfectDry or the TwinPower system (pp.38 - 39) help to dry your laundry gently and economically.

The patented¹⁾ Miele honeycomb drum



Only from MIELE **Laundry care with the air-cushion effect**

HONEYCOMB DRUM

Your laundry floats softly on an air cushion which forms in the depressions of the sculpted honeycomb structure for a far gentler and less creased drying result, which makes ironing easier too.

Laundry care with a special lifting action

Thanks to the unique honeycomb structure, the laundry is drawn higher up the rotating drum, allowing it to hover longer in the warm air, subjecting it to less mechanical handling.

1 – 7 kg drum capacity

The rounded soft ribs of the Miele honeycomb drum ensure gentle laundry fall with larger loads or large items. With a capacity of up to 7 kg, Miele has the right appliance to suit every need.



Better results

The independent Hohensteiner Institute confirm that Miele tumble dryers dry laundry more evenly and with fewer creases.

¹⁾ European Patent EP 1 293 594 B 1

Tumble dryers

Special programmes

Different fabrics, different requirements - Miele special programmes are a perfect match.



Automatic Plus

For a mixed load of cotton and easy care garments.



Sportswear

Makes sure your sportswear is always ready to go.



Outerwear

Maintains the functional properties of your high-value outdoor clothing and protects you from wind and weather.



Shirts

Ensures less creasing for shirts and blouses and cuts down on ironing.



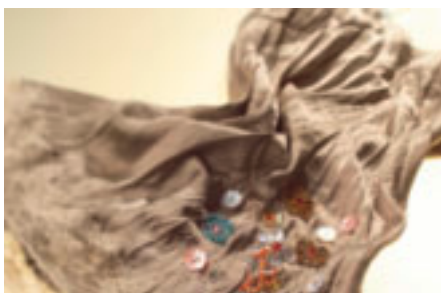
Denim

Protects your favourite jeans from faded stripes and creases.



Cottons

Excellent drying results for cotton, linen or cotton mix fabrics, e.g. table linen, towelling, underwear, etc.



Delicates

Gives optimum care for synthetics.



Minimum iron

Gentle drying of minimum iron fabrics with a special drum rhythm for reduced creasing.



Drying basket programme

This special programme is great for drying items which are not suitable for drying using mechanical action, such as sport shoes and soft toys, as the drum does not rotate.

Individual care for your laundry to keep it beautiful for years to come.



Woollens handcare

For the gentlest care of your woollens – makes your favourite items plump and fluffy.



Express

For rapid drying of smaller loads.



Proofing

Optimum effectiveness is achieved by thermally fixing the proofing agent.



Pillows

Perfect even drying for pillows, whether down, feather or synthetic filling.



Cotton hygiene / minimum iron hygiene

Bacteria and dust mites are reliably killed by a special temperature/time profile, so allergy sufferers can breathe easily.



Gentle smoothing

Dries damp laundry crease-free and visibly smoothes dry textiles, reducing ironing by up to 30%.



Silks handcare

For gentle drying of your silk garments with less creasing.



Gentle tumble

With this option on the heat-pump dryer, drum rotation is reduced making it excellent for delicate garments and items that do not tolerate too much mechanical action.



Freshen up

Freshens up clothes and cuddly toys and can save a “proper” wash.

Tumble dryers

Product advantages: highlights



Exclusive
to Miele

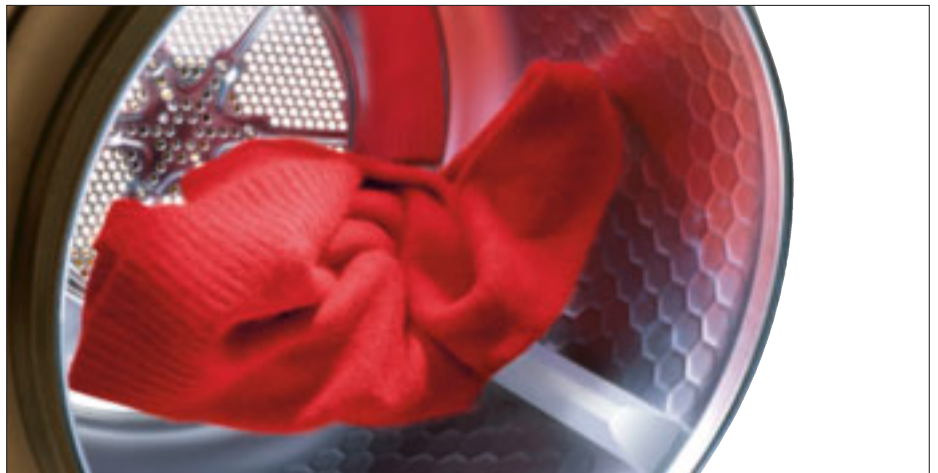
PerfectDry: perfectly dried laundry



The patented¹⁾ PerfectDry system continually measures the remaining humidity of the laundry and so ensures perfect drying: reliably, regardless of water quality. That is by no means guaranteed for appliances without PerfectDry, for the constitution of the water determines its electrical conductivity, which is critical in moisture-controlled drying. PerfectDry recognises the conductivity of the water and customises the drying process accordingly, preventing over- or under-drying, and ensuring the desired degree of dryness every time.

Intelligent drum reversal

A Miele tumble dryer alters the direction of its drum rotation at irregular intervals, preventing tangles and ensuring even drying with fewer creases.



TwinPower system

In Miele heat pump dryers, laundry direction is also reversed using an intelligent system of two separate motors, one for the drum and one for the fan (TwinPower). The visible result: your laundry is dried gently and evenly with fewer creases.



Exclusive to Miele Integrated condensate drain hose - patented²⁾

All Miele condenser dryers, including the heat pump dryers, have an integrated condensate drain hose with hose stowage, allowing you to drain the water directly into the sink or into the drain, and eliminating the need to empty the condensate container.



2) European Patent EP 1 186 697 B1

Tumble dryers

Product advantages: convenience and quality



Crease care

If you cannot remove your laundry immediately at the end of the programme, crease care ensures that the textiles are gently moved at regular intervals to prevent the formation of creases.



Drum lighting

All Miele tumble dryers in this brochure are equipped with a drum light, illuminating the honeycomb drum perfectly, so that no item can be overlooked when unloading.



Convenient loading angle

Miele doors can be opened particularly wide. With the large loading door and the ergonomic drum loading angle, loading and unloading a Miele tumble dryer is extremely convenient. You have a better view into the drum and: your back is spared.



Extremely quiet

The casing and airways of the Miele heat pump dryer are constructed to minimise air current and oscillation noises, so you can use your tumble dryer anytime, without disturbing anyone.



Enamelled front

Miele is the only manufacturer which enamels the front of all of its tumble dryers. The superior surface is scratch- and corrosion, acid and alkaline resistant, easy to clean and colourfast.



Fluff filters

In Miele condenser dryers, the circulating air flow is very effectively kept clear of fluff by two filters in the door. This guarantees problem-free operation, long life and more convenience: for in comparison to competitors, the condenser unit in Miele dryers rarely needs to be cleaned. Filters are accessible and easy to clean.

For Miele heat pump dryers there is an additional fine filter, which is also easy to clean, for a longer appliance life.

Tumble dryers

Product advantages: safety



Optical interface

All Miele tumble dryers have an integrated optical interface. In the event of a fault, the service engineer can communicate with your tumble dryer via a laptop to diagnose the cause of the fault quickly.



Empty out container indicator light

An LED signal or information in the display indicates when the condensate container needs to be emptied. (Does not apply with automatic condensate drainage)



Clear airways indicator light

The “clear airways” indicator light warns of fluff or foreign bodies in the airways. Cleaning the fluff filters and condenser unit (for the heat pump dryer) will restore the dryer to efficient operation.



Buzzer

When the drying programme is finished, a buzzer sounds, so your laundry does not have to spend longer than necessary in the drum.

Tumble dryers

Product advantages: sustainability



The best way to dry your laundry

Which method of drying laundry is the best today – ecologically and economically? Line drying in the garden is not always possible for everyone and at any time. Line drying in a (heated) room is not recommended from an ecological point of view¹⁾. The additional air humidity in the room requires increased ventilation, otherwise damage from damp and mould might occur. This results in considerable heat loss.

Miele tumble dryers are, with their excellent energy efficiency, the ecological and economical solution. The patented Miele honeycomb drum²⁾, the patented PerfectDry system³⁾, and the intelligent special programmes also provide the gentlest care for your laundry. You can feel the difference: with a Miele tumble dryer your laundry will always come out soft and fluffy.

Miele tumble dryers are convenient and economical use. All conventional Miele condenser dryers achieve a 2 star energy efficiency rating. You can dry even more economically with a Miele EcoComfort heat pump dryer: energy costs are almost halved. The outstanding statistic: 47% more economical than a 2 star energy rated condenser dryer.



Responsibility for the future

The progressive climate change and ever-dwindling energy resources are considerable challenges to Miele both today and in the future. Environmental considerations play a large part in every respect at Miele: Miele appliances are all recyclable and are extremely economical in electricity and water consumption. Environmentally friendly technology is an integral to production. The environment is also at the forefront of our logistics and sales operations.

Save energy - with Miele

Miele EcoComfort heat pump dryers set new standards in energy efficiency: they use only approximately half as much energy as standard condenser dryers. With Miele heat pump dryer you can appreciably reduce energy costs and help the environment.



Miele EcoComfort – the saving miracle

The basis of the Miele heat pump dryer is the special heat pump technology, where dry air is warmed with a heat pump. In contrast to standard condenser dryers, the heat produced is continually re-used, enabling the Miele EcoComfort tumble dryer to achieve a 6 star energy efficiency rating.

1) Source: Environment Journal dated 14.03.2008

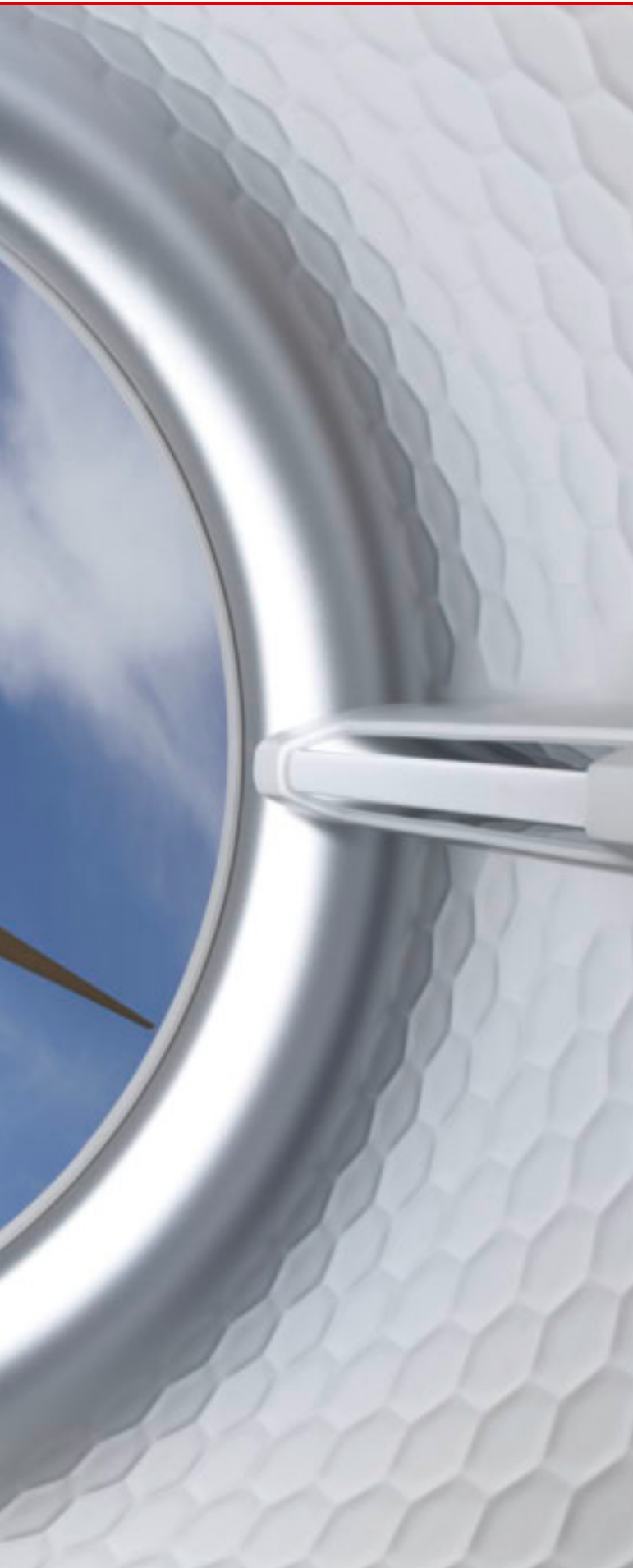
2) European patent EP 1 293 594 B 1

3) German patent DE 197 19 661 C2

What do they mean?

Symbols at a glance





Tumble dryers



Honeycomb drum: Cushioning effect for extra gentle laundry care



Honeycomb drum: 1 - 7 kg load capacity



Honeycomb drum: 1 - 8 kg load capacity



PerfectDry: for perfect drying results – the drying level required is always achieved



Heat pump technology: energy savings made by re-using heat for drying



Gentle smoothing: Special programme to smooth creases in damp or dry laundry

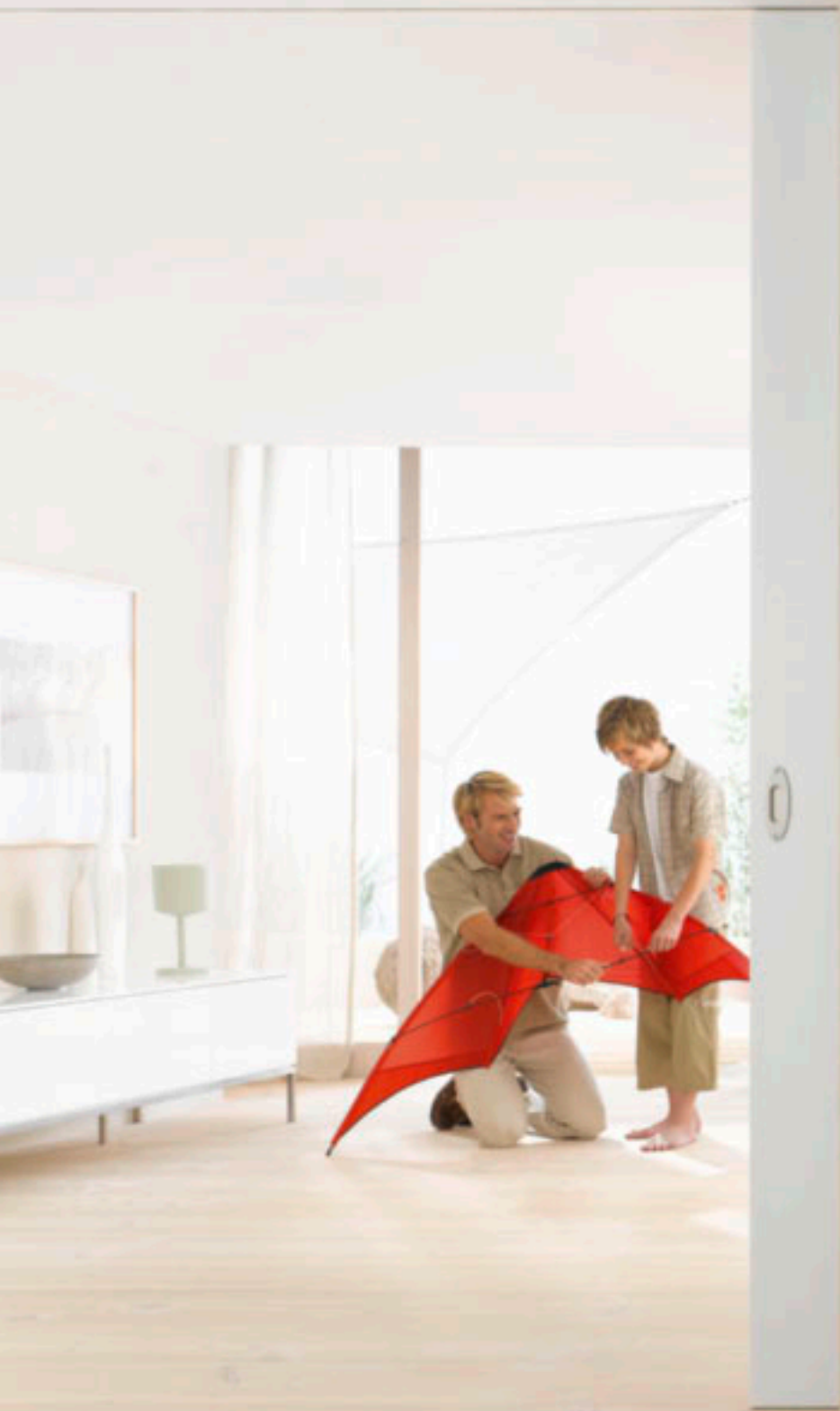
T 7000 tumble dryer range

Product overview



Model/name	T 7944 C	T 7950 WP
Drum		
Patented honeycomb drum	●	●
Load in kg	1-7	1-7
Intelligent drying	●	●
Perfect Dry-drying system	●	●
Drum reverse action	●	●
Timed drying	●	●
Design		
Control panel	5° incline	5° incline
Control panel colour	Lotus white	Lotus white
Appliance colour	Lotus white	Lotus white
Programme selection		
Programme selection	Rotary selector	Rotary selector
Display	7-segment	7-segment
Programme sequence display	●	●
Features		
Delay start up to 24 hours/Time left display/Time of day display	●/●/-	●/●/-
Buzzer	●	●
Choice of operating language	-	-
Drying programmes		
Automatic Plus	●	●
Cottons/Minimum iron/Delicates	●/●/●	●/●/-
Shirts/Silks handcare/Woollens handcare	-/-/●	●/-/●
Express/Pillows	●/-	●/-
Denim/Sportswear	●/-	●/-
Proofing/Outerwear	-/-	●/-
Gentle smoothing	●	●
Warm air/Cool air/Hygiene	●/●/-	●/-/-
Basket programme	-	-
Programmable options		
Short	-	-
Anti-crease	●	●
Low temperature/Gentle tumble	●/-	-/●
Freshen up	-	-
Safety		
PIN code lock	-	-
Optical interface	●	●
Quality		
Enamelled front	●	●
Installation		
Stackable/Side-by-Side	●/●	●/●
Slides under worktop/Built-under	●/-	●/-
Dimensions and consumption values		
H x W x D (cm)	85.0 x 59.5 x 63.4	85.0 x 59.5 x 63.4
Energy efficiency star rating	2	6
Energy consumption (kWh/year)	292	127





T 8000 tumble dryer range

Product overview



Model/name	T 8823 C	T 8861 WP	T 8929 WP
Drum			
Patented honeycomb drum	●	●	●
Load in kg	1-7	1-8	1-7
Intelligent drying			
Perfect Dry-drying system	●	●	●
Drum reverse action	●	●	●
Timed drying	●	●	●
Drying system			
Condenser/Vented	●/-	●/-	●/-
Condensed water container	●	●	●
Integrated condensed water outlet	●	●	●
Design			
Control panel	23° angle	23° angle	23° angle
Control panel colour	Lotus white	Lotus white	Lotus white
Appliance colour	Lotus white	Lotus white	Lotus white
Programme selection			
Programme selection	Rotary selector	Rotary selector	Rotary selector
Display	7-segment	7-segment	3 line LCD display
Programme sequence display	●	●	In display
Features			
Delay start up to 24 hours/Time left display/Time of day display	●/●/-	●/●/-	●/●/●
Buzzer	●	●	●
Drum lighting	●	●	●
Choice of operating language	-	-	●
Drying programmes			
Automatic Plus	●	●	●
Cottons/Minimum iron/Delicates	●/●/●	●/●/-	●/●/●
Shirts/Silks handcare/Woolens handcare	●/-/●	●/-/●	●/●/●
Express/Pillows	●/-	●/-	●/●
Denim/Sportswear	●/-	●/-	●/●
Proofing/Outerwear	●/-	●/●	●/●
Gentle smoothing	●	●	●
Basket programme	-	-	●
Timed drying Cool air/Warm air/Hygiene	●/●/-	-/●/●	●/●/●
Programmable options			
Short	-	-	-
Anti-crease	●	●	●
Low temperature/Gentle tumble	●/-	-/●	-/●
Freshen up	-	-	●
Safety			
PIN code lock	-	-	●
Optical interface	●	●	●
Quality			
Enamelled front	●	●	●
Installation			
Stackable/Side-by-Side	●/●	●/●	●/●
Slides under worktop/Built-under	●/●	●/●	●/●
Dimensions and consumption values			
H x W x D (cm)	85.0 x 59.5 x 58.7	85.0 x 59.5 x 59.6	85.0 x 59.5 x 59.6
Energy efficiency star rating	2	6	6
Energy consumption (kWh/year)	292	149	127





T 8001 WP Supertronic

●
1-7
●
●
●
●/-
●
●
23° angle
Alu/Silver
Lotus white
Touch controls
Navigation display
In display
●/●/●
●
●
●
●
●/●/●
●/●/●
●/●
●/●
●/●
●
●
●/●/●
-
●
-/●
●
●
●
●
●/●
●/●
85.0 x 59.5 x 59.6
6
127



Laundry care

Accessories

Washer-dryer stacks

Most Miele washing machines and tumble dryers can be combined into a stack to save space. The washing machine must always be on the bottom.

A stacking kit is required for complete stability. The table on the right will show you which one is best for your appliances. All stacking kits are finished in lotus white, to match Miele appliances - some other colours are also available.



WTV 407

The stacking kit features an integrated push-pull worktop. Designed to stack W 3000/W 5000 washing machines and T 8000 tumble dryers.

WTV 412

Universal stacking kit without push-pull worktop for all Miele washing machines and tumble dryers

WTV 414

The WTV 414 has a push-pull worktop and an integrated accessory compartment, e.g. for operating instructions for the appliance. Designed for stacking W 1000/T 7000 models

Tumble dryer	T 200 T 4000 T 8000	T 200 T 4000 T 8000		T 200 T 4000 T 8000	T 7000	T 200 T 4000 T 8000	T 7000	T 7000
	WTV 406	WTV 407*		WTV 412	WTV 412	WTV 412	WTV 412	WTV 414
Deep ca.	60 cm*	60 cm*		60 cm*	63 cm*	63 cm	63 cm	63 cm
High ca.	170 cm	170 cm		170 cm	170 cm	170 cm	170 cm	173 cm
Washing machine	W 500 W 2000 W 3000 W 5000 straight panel	W 500 W 2000 W 3000 W 5000 angled or Comfort panel		W 500 W 2000 W 3000 W 5000 universal	W 500 W 2000 W 3000 W 5000 straight or angled panel	W 1000	W 1000	W 1000
* for W 5000: + approx. 4 cm.								
Washing machines For combination with Comfort panel: H = approx. 173 cm, D = 65 cm								

Installation surface

A concrete floor is the most suitable installation surface for a washing machine. If installed on wooden floorboards there is a risk of it vibrating during the spin. We recommend the use of a plywood base (at least 59 x 52 x 3 cm). It should span several joists and be bolted to the joists and not just to the floorboards. Check for the presence of any pipework and cabling first. If possible install the machine in a corner, as this is usually the most stable part of the floor.

If the washing machine or tumble dryer is to be installed on a raised plinth, Miele recommend that only concrete or bricked plinths be used. The units must be secured against slippage via retaining clips available from Miele spare parts. Stacked units must not be installed on a raised plinth.

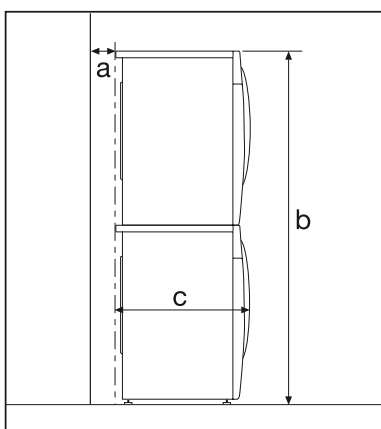
Hinging

The tumble dryers are all supplied left-hand hinged and the washing machines and washer dryer are supplied with right-hand hinging.

Washer and tumble dryer stack

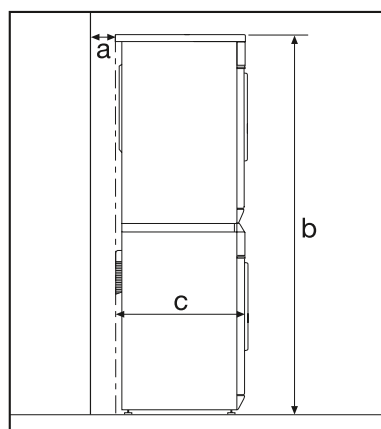
Where space is at a premium, a Miele tumble dryer can be fitted on top of the corresponding washing machine by using the appropriate WTV stacking kit (available to order). The result is that two appliances can be accommodated on a footprint of less than half a square metre.

The W 5000 washing machines and T 8000 tumble dryers can be fitted under a continuous worktop using the appropriate UBS – W/T building-under kit (available to order).



W 1000 + T 7000

- a) Min. safety distance from wall: 2 cm
- b) Height: Stacking kit with pull-out shelf: max. 172 cm
Stacking kit without pull-out shelf: max. 170 cm
- c) Depth of washer dryer stack: approx. 65 cm



W 5000 + T 8000

- a) Min. safety distance from wall: 2 cm
- b) Height: Stacking kit with pull-out shelf: max. 169 cm
Stacking kit without pull-out shelf: 170 cm
- c) Depth of washer dryer stack: approx. 63 cm

Product Information

Miele						
Model no	W 1913	W 5741	W 5903 WPS	W 5873 WPS	W 5965 WPS	W 5000 WPS Supertronic
Matching tumble dryer	T 7944 C T 7950 WP	T 8823 C T 8861 WP	T 8861 WP	T 8861 WP	T 8929 WP	T 8001 WP Supertronic
Accessories						
Stacking kit for matching dryer (with shelf)	WTV 414	WTV 407	WTV 407	WTV 407	WTV 407	WTV 407
Stacking kit for matching dryer (without shelf)	WTV 412	WTV 412	WTV 412	WTV 412	WTV 412	WTV 412
Performance/Consumption data¹⁾						
Energy efficiency star rating ²⁾	4.5	4.5	4.5	4.5	4.5	4.5
Warm wash energy consumption (kWh/year)	210 ³⁾	208 ³⁾	208 ³⁾	221 ⁴⁾	221 ⁴⁾	221 ⁴⁾
Water Efficiency star rating (WELS) ⁵⁾	4	4.5	4.5	4.5	4.5	4.5
Water consumption (l/wash)	69 ⁶⁾	62 ⁶⁾	62 ⁶⁾	68 ⁷⁾	68 ⁷⁾	68 ⁷⁾
Features						
Direct enamel front	●	●	●	●	●	●
Removable panels	●	●	●	●	●	●
Ergonomic door opening (30 cm)	-	●	●	●	●	●
Extra large ergonomic door opening (33 cm)	●	-	-	-	-	-
Ergonomic loading angle	●	-	-	-	-	-
AutoDos: Automatic detergent dispensing	-	-	-	-	-	●
SteamCare technology	-	-	-	-	●	●
Programmable options						
Choice of different languages	●	●	●	●	●	●
12 h/24 h clock	-	-	-	-	●	●
Temperature °C/°F	●	●	●	●	●	●
Display brightness/contrast	●	●	●	●	●	●
Suds cooling	●	●	●	●	●	●
Gentle action	●	●	●	●	●	●
Soak time	-	-	●	●	●	●
Longer pre-wash Cottons	●	●	●	●	●	●
Buzzer	●	●	●	●	●	●
Keypad tones	●	●	●	●	●	●
Energy-saving stand-by mode	●	●	●	●	●	●
Anti-crease action on/off	●	●	●	●	●	●
Lock code	●	●	●	●	●	●
Memory	●	●	●	●	●	●
Water intake	-	-	●	●	●	●
Safety features						
Water Control system	●	●	-	-	-	-
Waterproof system	-	-	●	●	●	●
Check drain/inlet indicators	●	●	●	●	●	●
Automatic safety door lock	●	●	●	●	●	●
In-operation lock	●	●	●	●	●	●
Fault indication	●	●	●	●	●	●
Emergency door release	●	●	●	●	●	●
Easy access manual drain	●	●	●	●	●	●
Water inlet filter	●	●	●	●	●	●
Dimensions and weight						
Height (cm)	85	85	85	85	85	85
Width (cm)	59.5	59.5	59.5	59.5	59.5	59.5
Depth (cm)	65.6	61.5	61.5	61.5	61.5	61.5
Depth with door open (cm)	107.4	99.3	99.3	99.3	99.3	99.3
Adjustable height (cm)	0.8	0.8	0.8	0.8	0.8	0.8
Stacked height: WTV with/without shelf (cm)	172/170	169/170	169/170	169/170	169/170	169/170
Net weight (kg)	99	96	96	98	98	98
Electricity and Water Connections						
Voltage (50 Hz) V	230	230	230	230	230	230
Fuse rating A	10	10	10	10	10	10
Total rated load kW	2.3	2.3	2.3	2.3	2.3	2.3
Power cable with plug m	1.6	1.6	1.6	1.6	1.6	1.6
Connection to hot/cold water via 1.6 m pressure hose						
with 3/4 inch (19 mm) threaded union	cold	cold	hot/cold	hot/cold	hot/cold	cold
Water supply pressure min. - max. bar	1-10	1-10	1-10	1-10	1-10	1-10
Drain connection hose m	1.5	1.5	1.5	1.5	1.5	1.5
Maximum drain pump height/length m	1/5	1/5	1/5	1/5	1/5	1/5
Radio, TV & mains interference suppressed	●	●	●	●	●	●
Operating instructions and warranty	●	●	●	●	●	●

¹⁾ According to AS/NZS 2040.2

²⁾ For more details, please ref. www.energyrating.gov.au

³⁾ using Cottons 40°C program seven times per week, when tested in accordance with Standard AS/NZS 2040.2

⁴⁾ using Cottons Eco 40°C program seven times per week, when tested in accordance with Standard AS/NZS 2040.3

⁵⁾ For more details, please ref. www.waterrating.gov.au

⁶⁾ using Cottons 40°C program, when tested in accordance with Standard AS/NZS 6400

⁷⁾ using Cottons Eco 40°C program, when tested in accordance with Standard AS/NZS 6401

N.B. These appliances conform to Australian Safety Regulations and must be installed in accordance with national and local regulations by a competent person.

Miele						
Model no	T 7944 C	T 7950 WP	T 8823 C	T 8861 WP	T 8929 WP	T 8001 WP Supertronic
Drying type						
Condenser	●	●	●	●	●	●
Matching washing machine	W 1913	W 1913	W 5741	W 5741 W 5873 WPS W 5903 WPS	W 5965 WPS	W 5000 WPS Supertronic
Accessories						
Stacking kit for matching washing machine (with shelf)	WTV 414	WTV 414	WTV 407	WTV 407	WTV 407	WTV 407
Stacking kit for matching washing machine (without shelf)	WTV 412	WTV 412	WTV 412	WTV 412	WTV 412	WTV 412
Performance/Consumption data¹⁾						
Energy Efficiency Star rating ²⁾	2	6	2	6	6	6
Energy consumption (kWh/year)	263 ³⁾	127 ³⁾	292 ³⁾	149 ⁴⁾	127 ³⁾	127 ³⁾
Features						
Perfect Dry LED	●	●	●	●	●	●
Drain pump on condenser dryer	●	●	●	●	●	●
Integrated condensate drainage	●	●	●	●	●	●
Heat exchanger with: heater bank/refrigerant	●/-	-/●	●/-	-/●	-/●	-/●
Fault diagnosis indication	●	●	●	●	●	●
Plinth filter	-	●	-	●	●	●
Drum lighting	●	●	●	●	●	●
Programmable options						
Choice of different languages	-	-	-	-	●	●
Extended drying option	●	●	●	●	●	●
Anti-crease	●	●	●	●	●	●
Keypad tones	●	●	●	●	●	●
Energy saving standby mode	●	●	●	●	●	●
Extended cooling down period	●	●	●	●	●	●
Buzzer	●	●	●	●	●	●
Memory on/off	●	●	●	●	●	●
Soft water setting	●	●	●	●	●	●
Drying stage indication	●	●	●	●	●	●
Clean out airways indication	●	●	●	●	●	●
Empty out container indication	●	●	●	●	●	●
Safety lock	●	●	●	●	●	●
Dimensions and weight						
Height (cm)	85	85	85	85	85	85
Width (cm)	59.5	59.5	59.5	59.5	59.5	59.5
Depth (cm)	63.4	63.4	58.7	59.6	59.6	59.6
Depth with door open (cm)	107.4	107.4	106.2	106.2	106.2	106.2
Net weight (kg)	52	70	51	61	69	69
Electrical Connection and Plumbing						
Voltage (50 Hz) V	230	230	230	230	230	230
Fuse rating A	10	10	10	10	10	10
Total rated load kW	2.14	1.10	2.14	1.10	1.10	1.10
Power cable with plug m	2	2	2	2	2	2
Drain hose length m	1.5	1.5	1.5	1.5	1.5	1.5
Maximum delivery head/drain hose length m	1.5/4	1.5/4	1.5/4	1.5/4	1.5/4	1.5/4
Radio, TV & mains interference suppressed	●	●	●	●	●	●
Operating instructions and warranty	●	●	●	●	●	●

¹⁾ According to AS/NZS 2442.2

²⁾ For more details, please ref. www.energyrating.gov.au

³⁾ using Cottons Normal Plus program once per week, when tested in accordance with Standard AS/NZS 2442.2

⁴⁾ using Cottons Extra dry program once per week, when tested in accordance with Standard AS/NZS 2442.3

N.B. These appliances conform to Australian Safety Regulations and must be installed in accordance with national and local regulations by a competent person.

Product Information

Miele	
Model no	WT 2780 WPM
Capacity	
5.5 kg HoneycombCare drum	●
Washing capacity (kg)	5,5
Drying capacity (kg)	2,5
Colour options	
Lotus White	●
Performance/Consumption data1)	
Energy Efficiency Star rating ³⁾	4
Energy consumption (kWh/year)	77 ⁴⁾
Energy Efficiency Star rating ³⁾	4
Energy consumption (kWh/year)	200 ⁵⁾
Water Efficiency Star rating (WELS) ⁶⁾	4
Water consumption (l/wash)	51 ⁷⁾
Spin speed options	
Minimum rpm	400
Maximum rpm	1600
Rinse Hold and No Spin	●
Controls and display	
Control panel Straight	Straight
Dial control	●
Plus LCD display	●
Buzzer option	●
Programme sequence indication	●
Excess detergent indication	●
Features	
Direct enamel front	●
Removable panels	●
Delay start	●
Time remaining display	●
Ergonomic door opening (30 cm)	●
Unique Honeycomb Care	●
Load size and dispensing recommendation	●
Drum lighting	●
Anti-crease action	●
Dryer functionality	Condenser
Automatic moisture sensor drying	●
Drying overload indicator	●
Drain pump for condenser dryer	●
Maximum no. of drying levels	7
AutoClean detergent dispenser drawer	●
Standard washing and drying programmes (wash temp. shown in brackets)	
Automatic plus (Cold – 40°C)	●
Cottons (Cold – 95°C)	●
Minimum iron (Cold – 60°C)	●
Delicates (Cold – 60°C)	●
Woollens (Cold – 40°C)	●
Silks (Cold – 30°C)	●
Express 20 (Cold – 40°C)	●
Denim (Cold – 60°C)	●
Shirts (Cold – 60°C)	●
Dark garments (Cold – 40°C)	●
Outerwear (Cold – 40°C)	●
Sportswear (Cold – 60°C)	●
Trainers (Cold – 40°C)	●
Proofing (40°C)	●
Soft toys (Cold – 40°C)	●
Hygiene (30 – 95°C)	●
Pillows (Cold – 95°C)	●
First Wash (Cold – 40°C)	●
Special wash programmes	
Curtains (Cold – 40°C)	●
Separate rinse	●
Starch	●
Drain/Spin	●
Special drying programmes	
Timed drying warm air	●
Timed drying cool air	●
Smoothing	●
Freshen up	●
Rinse out fluff	●

Miele	
Model no	WT 2780 WPM
Additional wash programme options	
Standard running times with Short option	●
Delay start	●
Water plus	●
Stains	●
Extra quiet	●
Extra rinse	●
Soak option	●
Pre-Wash	●
Additional drying programme options	
Low temperature	●
Programmable options for washing and drying	●
Choice of different languages	●
Buzzer volume (loud/normal/off)	●
Keypad tones (on/off)	●
Energy-saving stand-by mode	●
12 h/24 h clock	●
Temperature °C/°F	●
Display brightness/contrast	●
Lock code	●
Anti-crease action (on/off)	●
Distribution controller	●
Programmable options for washing	
Memory	●
Gentle action	●
Suds cooling	●
Longer pre-wash cottons	●
Programmable options for drying	
Door lock	●
Drying levels	●
Extended cool down	●
Safety features	
Water Control System	●
Check drain/inlet indication	●
Automatic safety door lock	●
In-operation lock	●
Fault diagnosis	●
Emergency door release	●
Easy access manual drain	●
Water inlet filter	●
Dimensions and weight	
Height (adjustable) (cm)	85
Width (cm)	59,5
Depth (cm)	58
Depth with door open (cm)	97,5
Net weight (kg)	101
Electrical Connection	
Voltage (50 Hz) V	230
Fuse rating A	10
Total rated load kW	2,3
Power cable with plug m	1,5
Water connection via 1.5 m pressure hose with 3/4 inch (19 mm) threaded union	cold
Water supply pressure min. - max. bar	1–10
Drain connection m	1,5
Maximum drain pump height/length m	1/5
Radio, TV & mains interference suppressed	●
Operating instructions and warranty	●

1) According to AS/NZS 2040.2 (washing) & AS/NZS 2442.2 (drying)
2) These programmes can also be set for timed drying for periods of between 15 minutes and 2 hours
3) For more details, please ref. www.energyrating.gov.au
4) using Cottons Normal program once per week, when tested in accordance with Standard AS/NZS 2442.2
5) using Cottons 40°C program seven times per week, when tested in accordance with Standard AS/NZS 2040.2
6) For more details, please ref. www.waterrating.gov.au
7) using Cottons 40°C program, when tested in accordance with Standard AS/NZS 6400
N.B. These appliances conform to Australian Safety Regulations and must be installed in accordance with national and local regulations by a competent person.

Miele Australia Pty. Ltd.
 ACN 005 635 398
 ABN 96 005 635 398

Miele Australia Pty. Ltd.
 Head Office
 1 Gilbert Park Drive
 Knoxfield VIC 3180

Telephone 1300 4 MIELE (1300 464 353)

Miele Center Knoxfield
 1 Gilbert Park Drive
 Knoxfield VIC 3180

Miele Center South Melbourne
 206-210 Coventry Street
 South Melbourne VIC 3205

Miele Center and Office Sydney
 3 Skyline Place
 Frenchs Forest NSW 2086

Miele Center and Office Brisbane
 39 Harvey Street North
 Eagle Farm QLD 4009

Miele Center and Office Adelaide
 83-85 Sir Donald Bradman Drive
 Hilton SA 5033

Miele Center and Office Perth
 205-207 Stirling Highway
 Claremont WA 6010

www.miele.com.au

Miele New Zealand Limited
 IRD 98 463 631

Head Office
 Level 2, 10 College Hill
 Freemans Bay, Auckland 1011

Telephone: 0800 4 MIELE (0800 464 353)

Miele Center Auckland
 8 College Hill
 Freemans Bay, Auckland 1011

www.miele.co.nz

Miele Global Headquarters
Miele & Cie. KG
 Carl-Miele-Strasse 29
 33332 Gütersloh
 Federal Republic of Germany

Foreign Sales Companies

(A)	Miele Ges.m.b.H., Wals/Salzburg
(AUS)	Miele Australia Pty. Ltd., Melbourne
(B)	N.V. Miele S.A., Mollem
(CDN)	Miele Limited, Vaughan/Ontario
(CH)	Miele AG, Spreitenbach
(CL)	Miele Ltda., Santiago de Chile
(CN)	Miele Shanghai Trading Ltd., Shanghai
(CZ)	Miele spol.s.r.o., Brno
(D)	Miele & Cie. KG, Gütersloh
(DK)	Miele A/S, Glostrup/Copenhagen
(E)	Miele S.A., Alcobendas/Madrid
(EST)	Miele OÜ, Tallinn
(F)	Miele S.A.S., Le Blanc-Mesnil/Paris
(FIN)	Miele Oy, Vantaa/Helsinki
(GB)	Miele Company Ltd., Abingdon
(GR)	Miele Hellas E.P.E., Psychiko-Athens
(H)	Miele Kft., Budapest
(HK)	Miele Hong Kong Ltd., Hong Kong
(HR)	Miele d.o.o., Zagreb
(I)	Miele Italia S.R.L., Eppan
(IND)	Miele India Pvt Ltd., New Delhi
(IRL)	Miele Ireland Ltd., Dublin
(J)	Miele Japan Corp., Shibuya-ku/Tokyo
(KZ)	Miele Liability Partnership, Almaty
(L)	Miele s.à.r.l., Luxembourg
(LT)	Miele Appliances UAB, Vilnius
(LV)	Miele SIA, Riga
(MAL)	Miele Sdn Bhd, Kuala Lumpur
(MEX)	Miele S.A. de C.V., Mexico City
(N)	Miele AS, Rud/Oslo
(NL)	Miele Nederland B.V., Vianen
(NZ)	Miele New Zealand Ltd., Auckland
(P)	Miele Portuguesa Lda., Carnaxide/Lisbon
(PL)	Miele Sp. z o. o., Warsaw
(RO)	Miele Appliances S.R.L., Otopeni
(ROK)	Miele Korea Ltd., Seoul
(RU)	000 Miele CIS, Moscow
(S)	Miele AB, Solna/Stockholm
(SGP)	Miele Pte. Ltd., Singapore
(SK)	Miele spol.s.r.o., Bratislava
(SLO)	Miele d.o.o., Ljubljana
(SRB)	Miele d.o.o., Belgrad
(TR)	Miele Elektrikli Ltd. Sti., Levent/Istanbul
(UA)	Miele LLC, Kiev
(UAE)	Miele Appliances Ltd., Dubai
(USA)	Miele, Inc., Princeton/New Jersey
(ZA)	Miele (PTY) Ltd., Bryanston/Johannesburg



www.mieleshop.com.au